

Finding Internet headers In Goldmine:

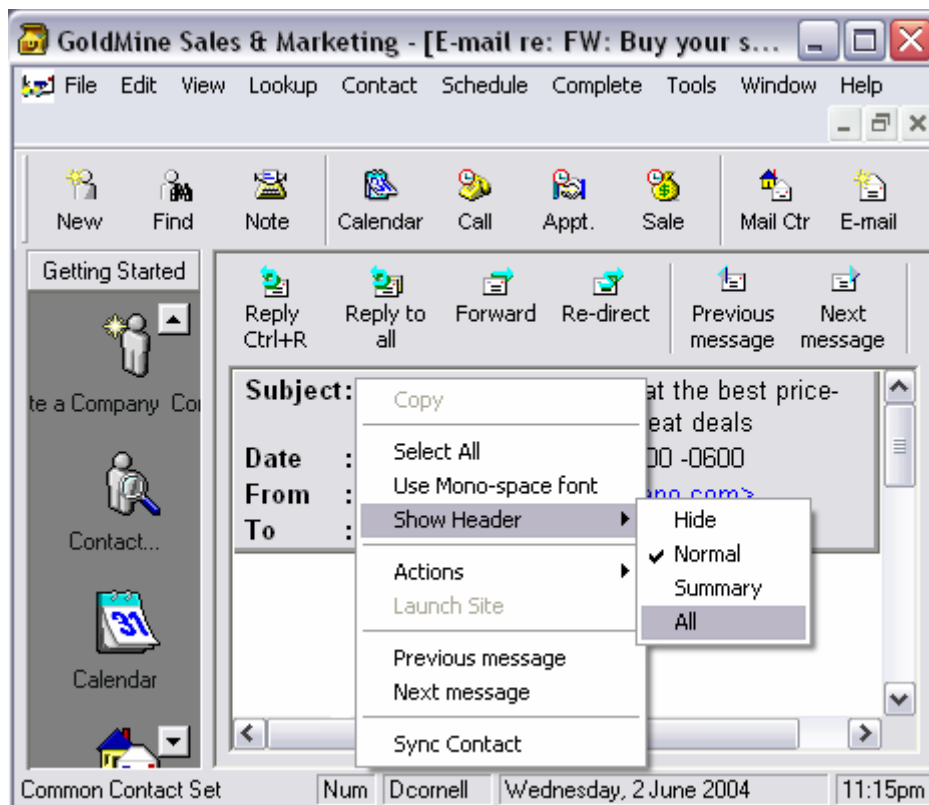
Headers are the e-mail addresses of the senders or recipients, date/time of the e-mails, subjects, etc. You can use headers to decipher who is really sending you e-mails. If you receive spam, you can locate the headers of the message and send them to your Internet service provider. They can then contact or black list the ISP from which the e-mails originated. The following tutorial explains how to locate all the message headers.

Highlight the e-mail in question to view the message.

Headers contain routing information such as **From, To, Subject, Date**, etc; however, usually not all the headers are displayed. To get all the headers, you need to do the following:

Double click the **desired message** to open it up.

Right click on the message and select **Show Header -> All** from the menus.



Goldmine displays all the headers.

Highlight all the header information.

Right click one of the headers and select **Copy** from the menu.

Compose a new e-mail message, right click and select **Paste** from the menu.

E-mail the headers to spam-analysis@netabn.com.

